



SNACK SCHEDULE

**Menu items are subject to substitution.

November 19th

AM: Juice, Animal Crackers

PM: Popsicles, Goldfish

November 20th

AM: Juice, Animal Crackers

PM: Popsicles, Goldfish

November 21st

AM: Juice, Animal Crackers

PM: Ice Cream Sandwiches



December 26th

AM: Juice, Graham Crackers, Apple Sauce

PM: Goldfish, String Cheese

December 27th

AM: Juice, Graham Crackers, String Cheese

PM: Goldfish

December 28th

AM: Juice, Graham Crackers, String Cheese

PM: Ice Cream Sandwiches

January 2nd

AM: Juice, Graham Crackers, String Cheese

PM: Snack Mix

January 3rd

AM: Juice, Graham Crackers, String Cheese

PM: Snack Mix

January 4th

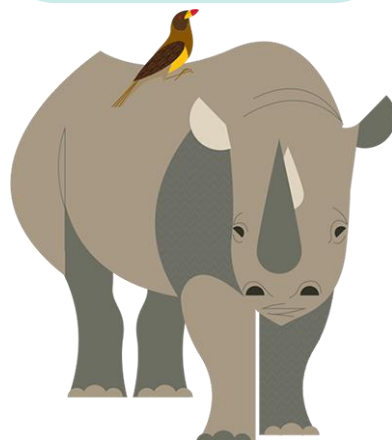
AM: Juice, Snack Mix, String Cheese

PM: Ice Cream Sandwiches

February 18th

AM: Juice, Snack Mix, String Cheese

PM: Graham Crackers, Apple Sauce



Ingredient Sheet

Juice

Thirster 100% Apple Juice: WATER, APPLE JUICE CONCENTRATE, ASCORBIC ACID, NATURAL FLAVORS.

Thirster 100% Grape Juice: WATER, GRAPE JUICE FROM CONCENTRATE, ASCORBIC ACID.

Thirster 100% Orange Juice: WATER, ORANGE JUICE FROM CONCENTRATE, ASCORBIC ACID, NATURAL FLAVORS.

Snacks

Roseli Mozzarella String Cheese: LOW MOISTURE PART SKIM MOZZARELLA CHEESE (PASTEURIZED PART SKIM MILK, CHEESE CULTURES, SALT, ENZYMES).

Allergens: [Contains milk.](#)

Glenview Farms Mild Cheddar Cheese: PASTEURIZED MILK, CHEESE CULTURES, SALT, ENZYMES, ANNATTO.

Allergens: [Contains milk.](#)

Keebler Animal Cracker: ENRICHED FLOUR WHEAT FLOUR, NIACIN, REDUCED IRON, THIAMIN MONONITRATE [VITAMIN B1], RIBOFLAVIN [VITAMIN B2], FOLIC ACID, SUGAR, SOYBEAN AND PALM OIL WITH TBHQ FOR FRESHNESS, HIGH FRUCTOSE CORN SYRUP, CONTAINS TWO PERCENT OR LESS OF SALT, CALCIUM CARBONATE, BAKING SODA, SOY LECITHIN, ARTIFICIAL FLAVOR.

Allergens: [Contains soy, wheat.](#)

Pepperidge Farm Goldfish Cracker: MADE WITH SMILES AND UNBLEACHED ENRICHED WHEAT FLOUR FLOUR, NIACIN, REDUCED IRON, THIAMINE MONONITRATE [VITAMIN B1], RIBOFLAVIN [VITAMIN B2], FOLIC ACID, CHEDDAR CHEESE [CULTURED MILK, SALT, ENZYMES], ANNATTO, VEGETABLE OILS CANOLA, SUNFLOWER AND/OR SOYBEAN, CONTAINS 2 PERCENT OR LESS OF: SALT, YEAST, SUGAR, AUTOLYZED YEAST, LEAVENING BAKING SODA, MONOCALCIUM PHOSPHATE, AMMONIUM BICARBONATE, PAPRIKA, SPICES CONTAINS CELERY AND DEHYDRATED ONIONS.

Allergens: [Contains milk, wheat.](#)

Keebler Honey Graham Cracker: GRAHAM FLOUR, ENRICHED FLOUR WHEAT FLOUR, NIACIN, REDUCED IRON, VITAMIN B1 [THIAMIN MONONITRATE], VITAMIN B2 [RIBOFLAVIN], FOLIC ACID, SUGAR, CANOLA OIL, CORN SYRUP, HONEY, MOLASSES, CONTAINS 2 OR LESS OF CALCIUM CARBONATE, LEAVENING BAKING SODA, SODIUM ACID PYROPHOSPHATE, MONOCALCIUM PHOSPHATE, SALT, ARTIFICIAL FLAVOR, VITAMIN A PALMITATE, BHT FOR FRESHNESS, SOY LECITHIN.

Allergens: [Contains soy, wheat.](#)

Garden of Eatin' Snack Mix: ENRICHED FLOUR WHEAT FLOUR, NIACIN, IRON, THIAMIN MONONITRATE, RIBOFLAVIN, FOLIC ACID, WHEAT FLOUR, VEGETABLE OIL SOYBEAN, CANOLA AND/OR CORN, RYE FLOUR. CONTAINS 2 OR LESS OF: SALT, YEAST, SUGAR, MONOSODIUM GLUTAMATE, CORN SYRUP, DRIED WORCESTERSHIRE SAUCE VINEGAR, MOLASSES, CORN SYRUP, WATER, SALT, CARAMEL COLOR, GARLIC POWDER, SUGAR, SPICES, TAMARIND, NATURAL FLAVOR, MALTODEXTRIN, COLOR ADDED, ONION POWDER, GARLIC POWDER, BAKING SODA, FUMARIC ACID, CARAWAY, DISODIUM INOSINATE, DISODIUM GUANYLATE, SODIUM DIACETATE. FRESHNESS PRESERVED BY BHT. CONTAINS WHEAT; MAY CONTAIN MILK AND SOY INGREDIENTS.

Allergens: [Contains wheat. May contain milk, soy.](#)

Mott's Unsweetened Applesauce: APPLES, WATER, ASCORBIC ACID VITAMIN C.

Blue Bunny Ice Cream Sandwich: REDUCED FAT ICE CREAM MILK, CREAM, SUGAR, CORN SYRUP, SKIM MILK, WHEY, BUTTERMILK, CONTAINS LESS THAN 1 OF VANILLA EXTRACT, MONO AND DIGLYCERIDES, CAROB BEAN GUM, CELLULOSE GUM, CARRAGEENAN, VITAMIN A PALMITATE. WAFERS WHEAT FLOUR, SUGAR, PALM OIL, COCOA PROCESSED WITH ALKALI, DEXTROSE, CARAMEL COLOR, CONTAINS 2 OR LESS OF CORN FLOUR, CORN SYRUP, FOOD STARCH-MODIFIED, NATURAL AND ARTIFICIAL FLAVOR, SALT, BAKING SODA, SOY LECITHIN.

Allergens: [Contains milk, soy, wheat. May contain peanuts and tree nuts.](#)

Bomb Pop Jr Popsicle: WATER, SUGAR, CORN SYRUP, HIGH FRUCTOSE CORN SYRUP, CONTAINS 1 OR LESS OF CITRIC ACID, NATURAL AND ARTIFICIAL FLAVORS, GUAR GUM, CELLULOSE GUM, XANTHAN GUM, BLUE 1, RED 40.

Allergens: [May contain milk, peanuts, and tree nuts.](#)

Luigi's Real Italian Ice: MICRON FILTERED WATER, MALTODEXTRIN, GLYCERIN, SORBITOL, NATURAL FLAVOR, CITRIC ACID, LEMON JUICE CONCENTRATE, ASPARTAME, XANTHAN GUM, ASCORBIC ACID VITAMIN C, AND FDC YELLOW 5.X000DX000DPHENYLKETONURICS: CONTAINS PHENYLALANINEX000D